

Mounting instructions for induction luminaires



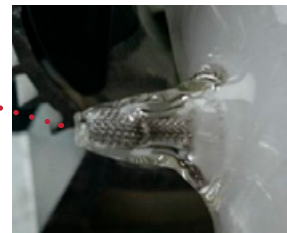
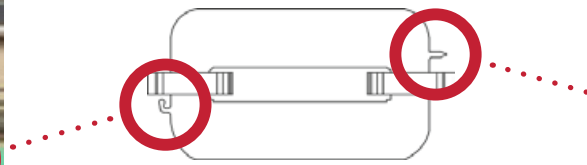
RED DOT SCANDINAVIA

These mounting instructions are valid for all induction luminaires with round or cornered vitreous body.

On each vitreous body, there are two glass appendices.



An appendix bent by 90°



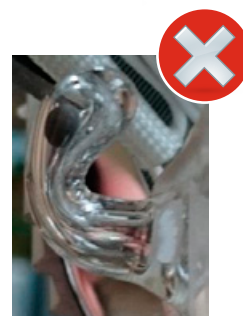
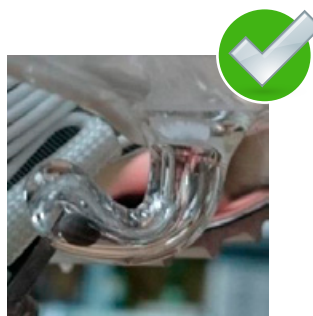
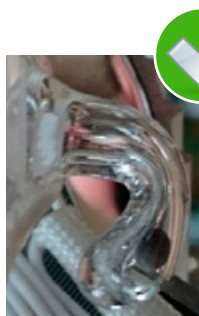
A straight appendix

Important information for the positioning of the bent appendix.

Within the appendix, there is a small black ball. That is the amalgam.

Over a period of time the amalgam will get smaller and smaller.

If mounted incorrectly it could fall into the vitreous body, causing the lamp to fail.



AFTER MOUNTING, THE BALL HAS TO LIE AT THE END OF THE APPENDIX!

If you have any questions concerning the mounting, please contact to us.